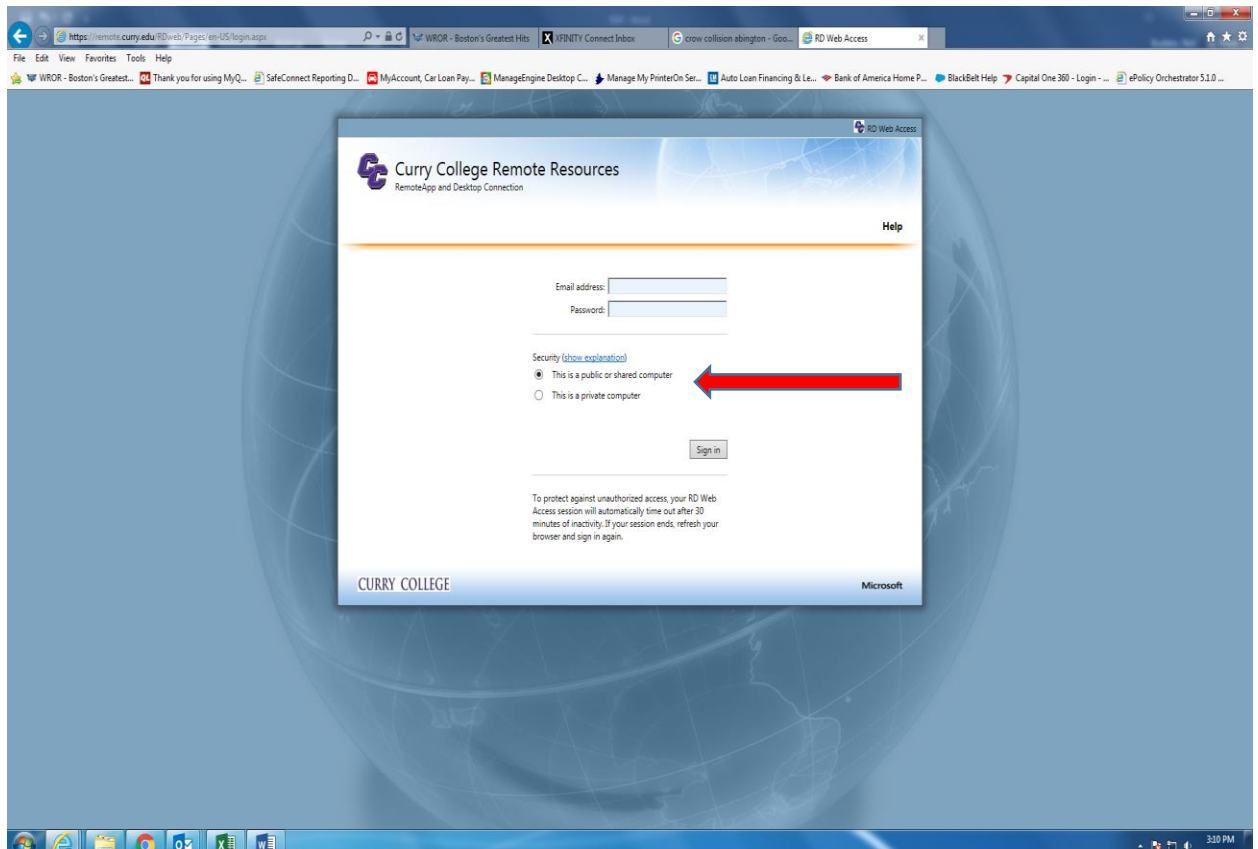


Curry College Remote Desktop For Google Chrome

Curry College Remote Resources website enables you to use a web browser to access Office Applications, Network resources, Banner Forms and CWIS.

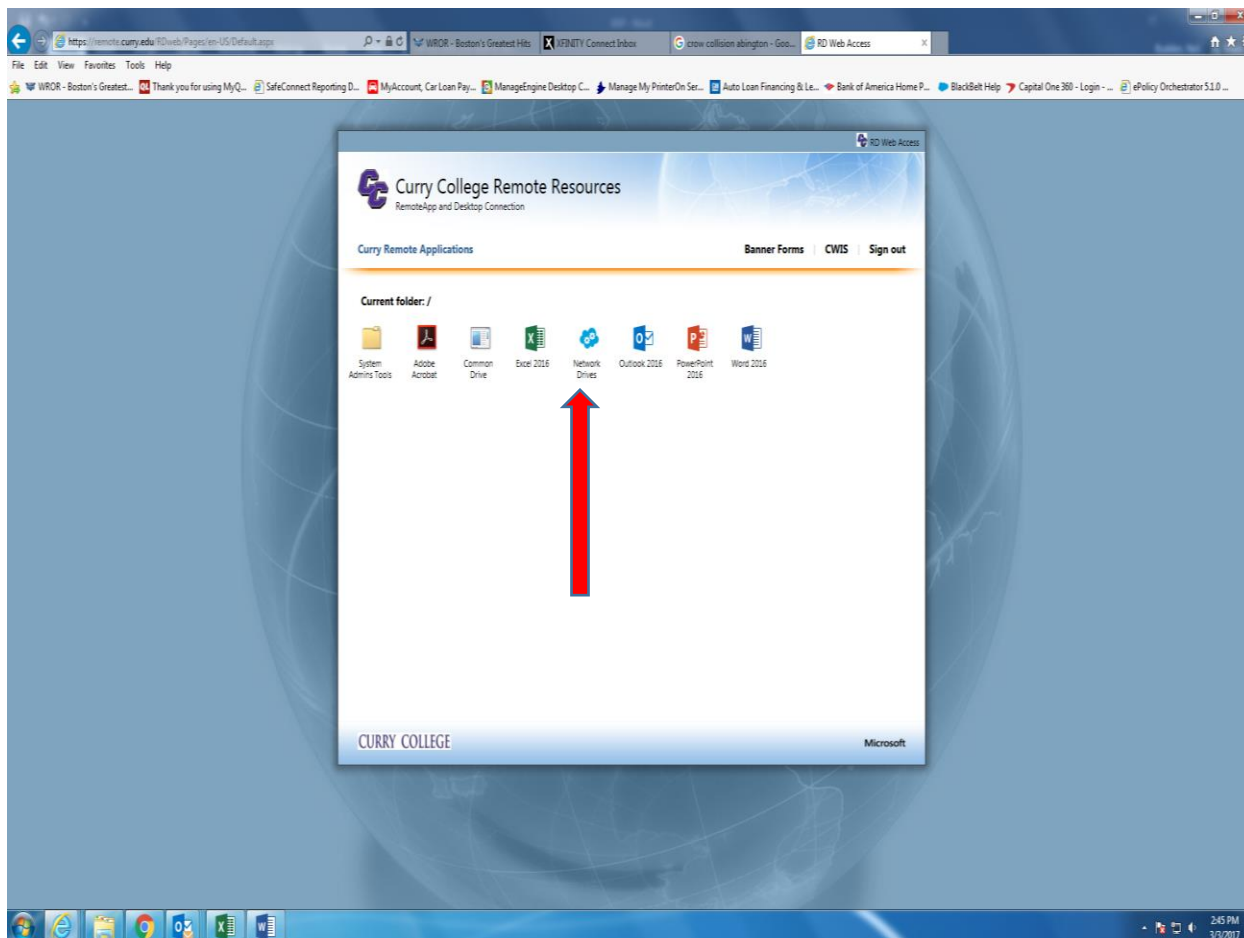
- Open Google Chrome and type <https://remote.curry.edu> into the address bar. This may take a minute to load.
- Enter your curry email, example (username@curry.edu)
- Enter your network password.
- Click Sign in.



- Leave the option “This is a public or shared computer” checked when you’re logging into a public or shared computer.
- You should not be in the habit saving passwords in a browser. Always treat any computer as if it’s a public computer and do not save passwords.

Curry College Remote Desktop For Google Chrome

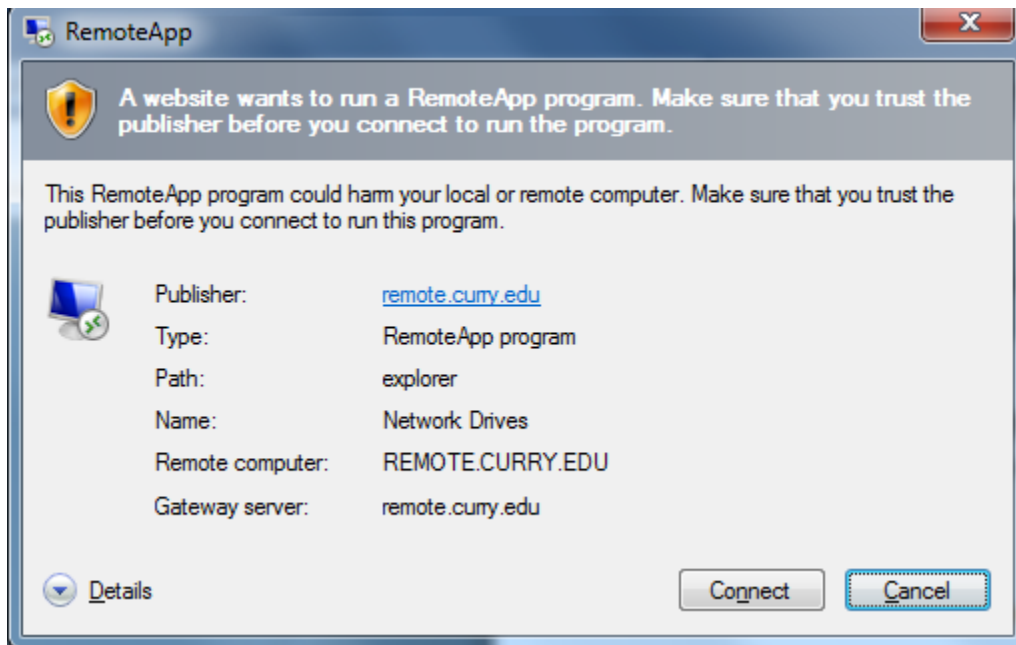
- You should now be logged into Curry Remote Resources.
- At this screen you can access applications and network drives.



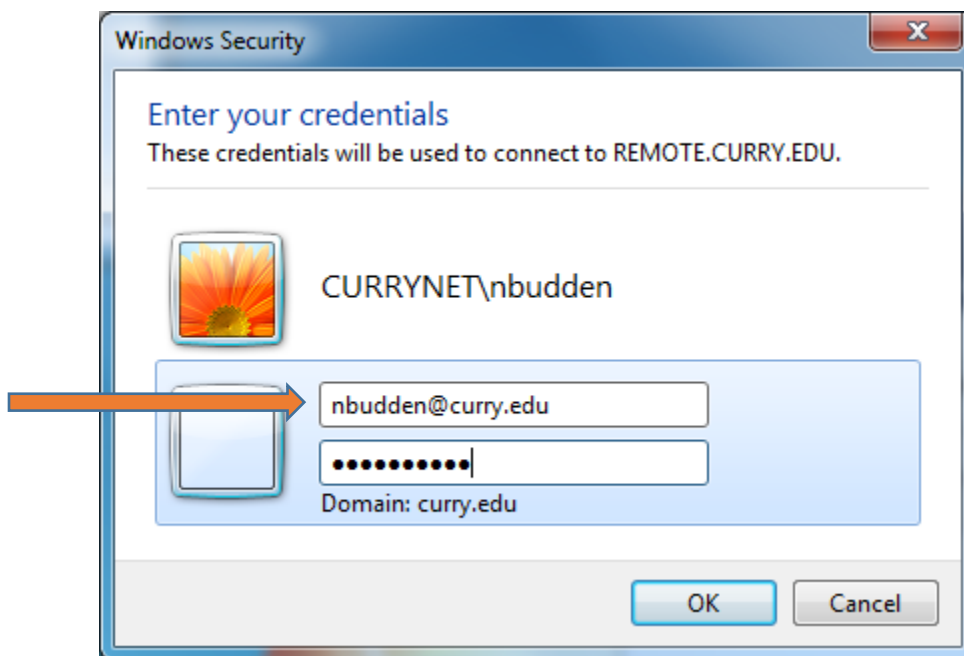
- Double click the Network Drives Icon to access any of your network drives.
- On the bottom of your browser there will be a download named "cpub-explorer-Re.....rdp". Once this download is complete click on the up arrow and click Open.

Curry College Remote Desktop For Google Chrome

- Click Connect to access your network drives.



- You may have to enter your credentials. If so please click Use another account and then enter in the **same email and password you used before**. Do not click Remember my credentials. Click OK.

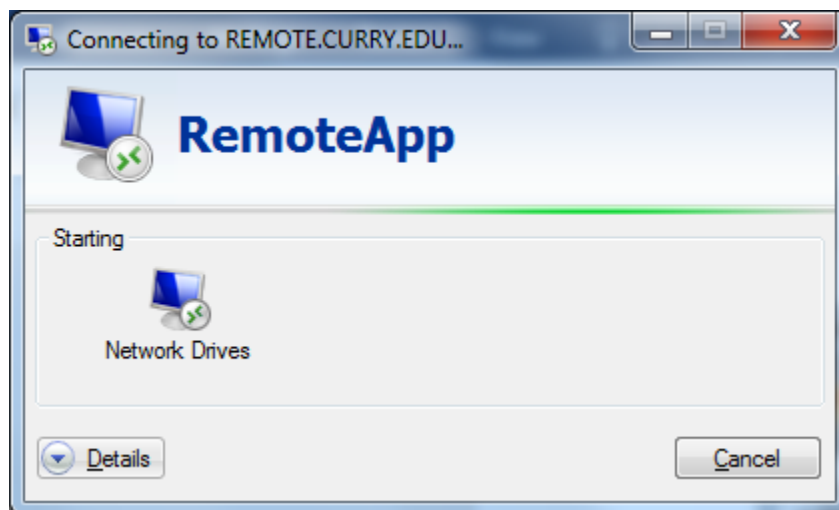


Curry College Remote Desktop For Google Chrome

- Click Yes to accept the security certificate.

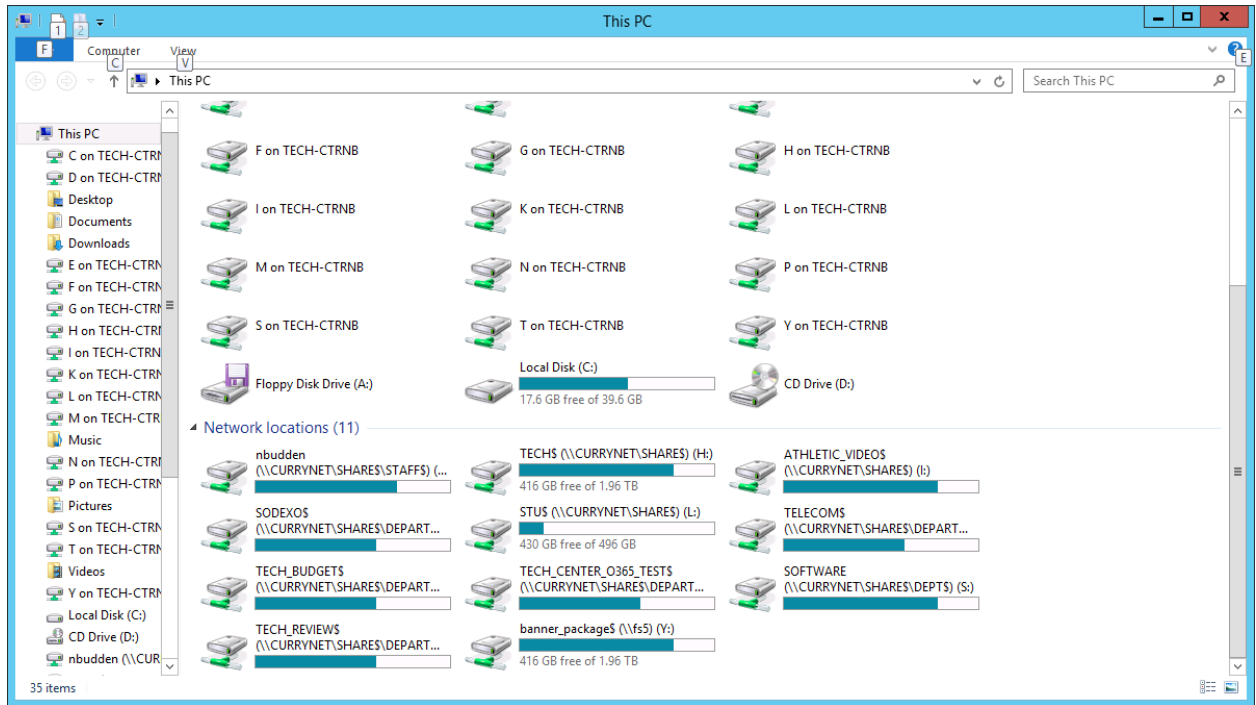


- You will see a window accessing your network drives.



- This window shows your network drives.

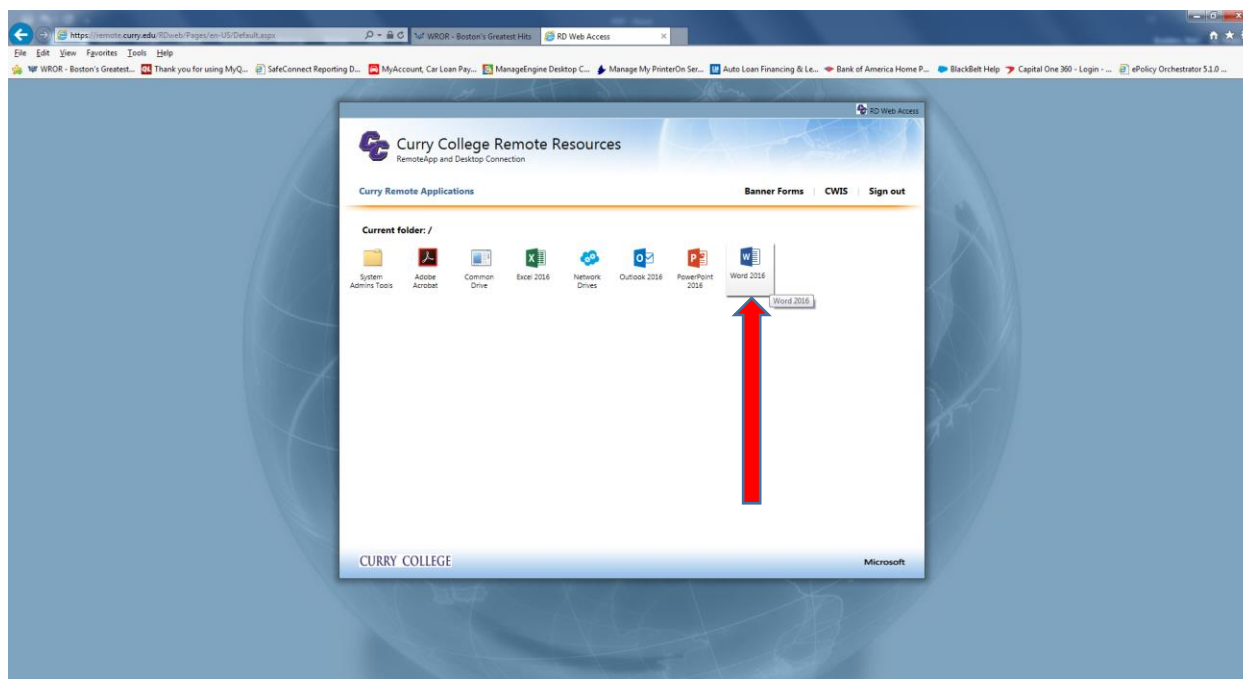
Curry College Remote Desktop For Google Chrome



- Remember when saving documents you have to save it to a network drive. If you save it to the desktop of the remote session desktop the document will be lost.
- To use any Office Application double click on the icon (Word, Excel, PP or Outlook).

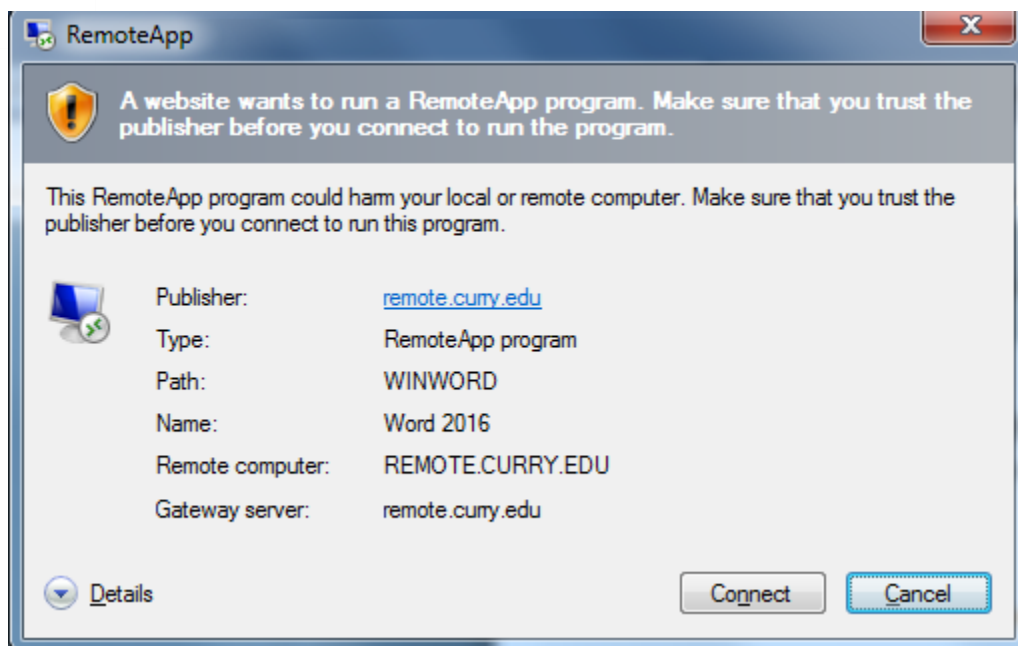
Curry College Remote Desktop For Google Chrome

- For Example: double click on the Word icon.

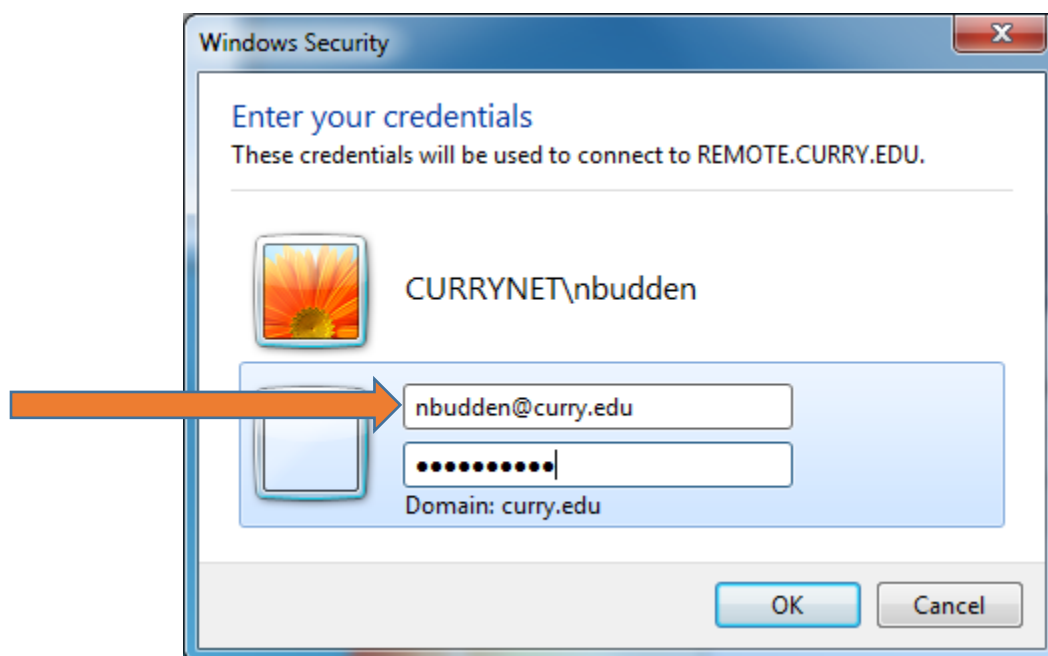


- On the bottom of your browser there will be a download named “cpub-WINWORD-.....rdp”. Once this download is complete click on the up arrow and click Open.
- Click connect to access Word.

Curry College Remote Desktop For Google Chrome

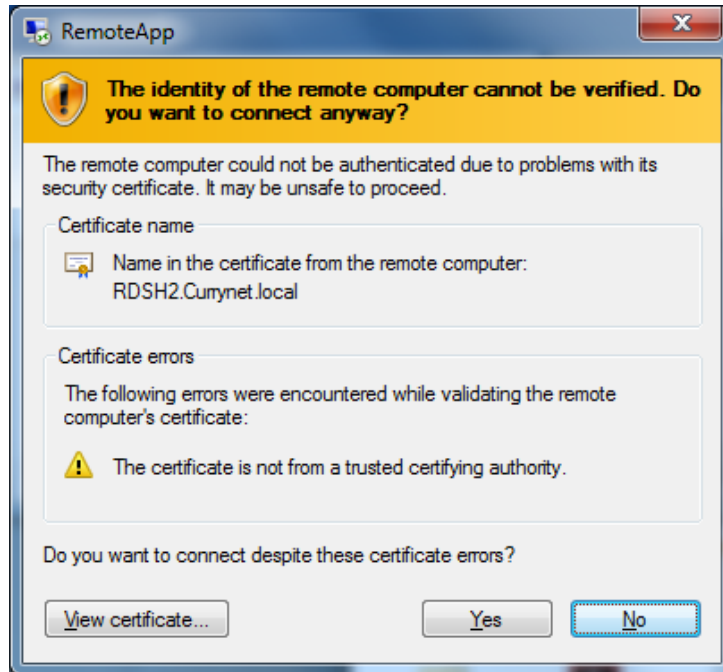


- You might have to enter your credentials again. Your username should already be selected, all you have to do is enter your password and click OK.

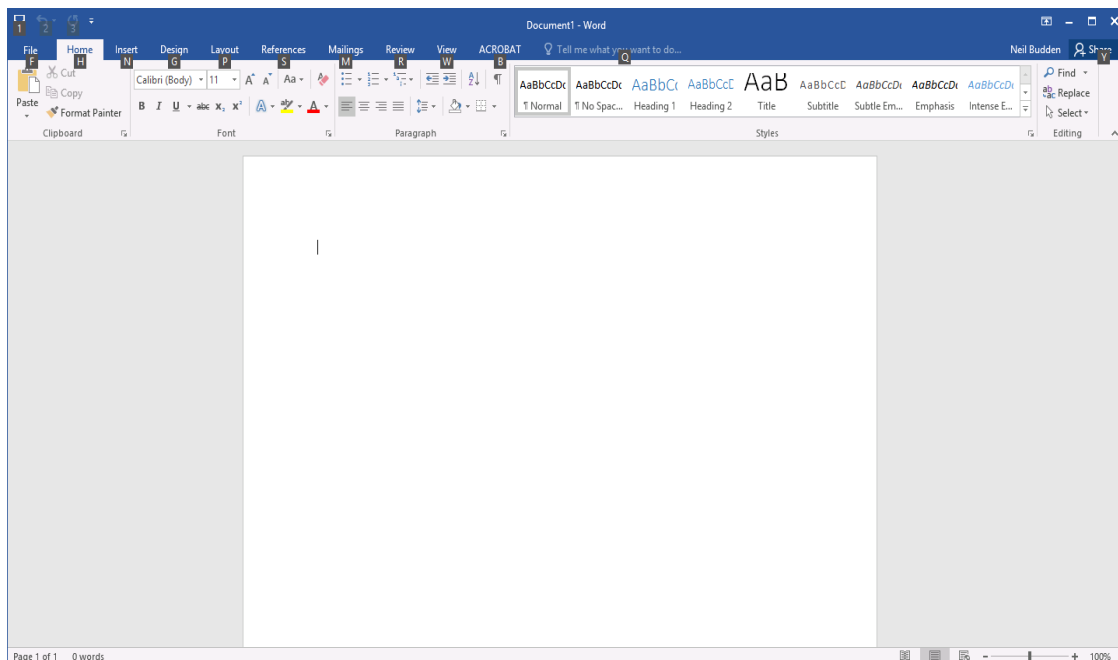


Curry College Remote Desktop For Google Chrome

- Click Yes to accept the security certificate.

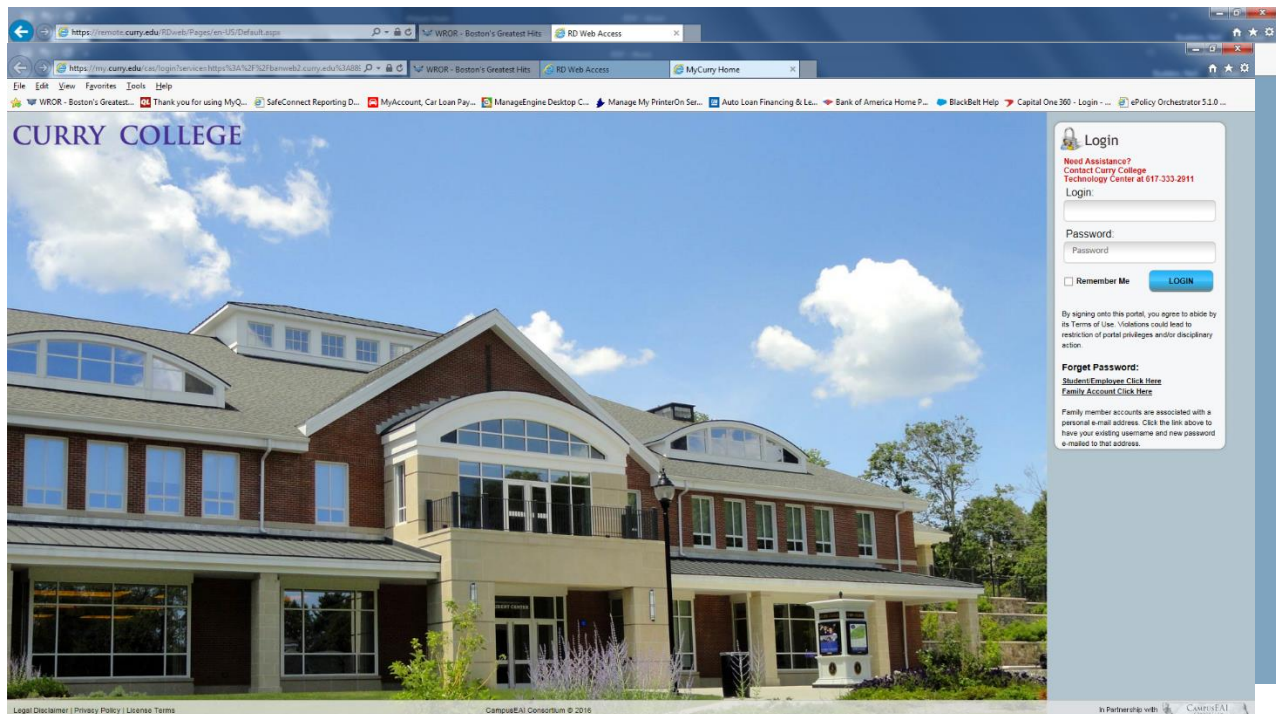


- Then a blank Word document should open. Follow the same process for the other applications.



Curry College Remote Desktop For Google Chrome

- Remember when saving to go under File and Save As. Choose one of your network drives.
- For use of Banner Forms or CWIS
- Double click either of the these links, a separate window will open



- Log into the portal using your portal login and password
- Navigate to the quick launch menu on the left to choose either CWIS or Banner.

Curry College Remote Desktop For Google Chrome

The screenshot displays the Curry College MyCurry portal. The left sidebar contains numerous icons for services such as On-Line Invoice, Curry Web Info System, Student E-Mail, Blackboard Learning System, Office 365 E-Mail, School Dude, ADP Portal, Phone Lookup, Academic Alert, CVIS Reports, Course Selection Guide/Wish List, New Student Checklist, Alumni E-Mail, Course Registration, Detailed Schedule, Forms, Degree Audit (CAS), Academic Advising, Emergency Contact, myCurry, Wireless Printing, Unofficial Transcript, Classrooms, Faculty Office Hours, and Reporting Dashboard. Two red arrows highlight specific icons: one points to the 'CWIS' icon, and the other points to the 'Banner' icon. The main content area shows a message feed with several notifications, a calendar for March 6th, and a list of events for today and tomorrow. The right sidebar includes a 'Surveys' section and a 'Quick Links' section.